

DVD GALAXY PRO

Networkable!
Up to 2000 disc bins
Copies up to 20 BD disc/hour



Autoloading, Heavy Duty BD/CD/DVD Duplication System

The DVD GALAXY PRO breaks new grounds in the BD/CD/DVD duplication industry allowing the user to duplicate up to **2000 discs unattended!** Or to **copy and print 1200 discs overnight and unattended!** Thanks to its innovative bin modules the system is extremely capacious and compact. The 400 disc bin configuration is only 70 cm/ 25 inches wide. The system comes with either four or eight BD or DVD burners. THE DVD Galaxy is a standalone unit but it is also ready to receive disc images and label files from a PC. Thanks to the Alea "Friendly-Rescue", the most advanced **Data Recovery Strategy** in the Industry , no job is lost even if the master disc is marginal.

The Job Loading Software even allows you to create image files and print files to upload onto the machine. When in standalone mode, the Galaxy allows the user to alternate blank discs and Master DVD/CD in the input magazine and to perform multiple DVD/CD duplication and/or Printing jobs unattended (Job Streaming).

Unique DVD Galaxy Features

- Hyper recording speed. **16X DVD start to finish.** Duplicates 8(eight) 4.7 GB DVDs in **6 minutes.**
- Up to **8 (eight)** 4XBD blu ray, 16XDVD, 40XCD Burners and up to **2000 disc bin capacity.**
- Bit-by-Bit Compare 8 disc **simultaneously** at BD/CD/DVD maximum read speed.
- Standalone duplication and printing of multiple Master CDs or DVDs (job streaming).
- Up **150** CD, 60 DVD or 20 BD copies per hour and without a PC.
- Massive 256 MB buffer to solve all CD/DVD recorder synchronization issues at 16x DVD write speed.
- Copy most of the current CD Formats. Including **CD-TEXT and RAW audio, CD-G, Karaoke**
- Supports **Dual Layer DVD** (8.9GB) and + or - formats.
- Scalable architecture. Up to **256 burners and 32 inkjet printers** in same system.
- Heavy duty. Up to a whopping **2000 disc magazine.** You get to pick your own configuration!
- Extremely **compact.** The **entry level system** takes up only 25 inches (70 cm) side-to-side.
- Built-in 240ml **Ink Fountain** to print up to 2400 discs without refill and for less than **3 cent** a disc.
- **Use standard HP ink cartridges** (type 56 & 57).
- Printer extension 100-disc bin de couples the copying from the printing process. The Galaxy copies and prints at the **same time and** provides a much faster production cycle of up to **60 disc per hour.**
- Unauthorized access to the system is protected by password.
- Keep the burners firmware current via the Galaxy automatic **Firmware Upgrade.**
- Automatic de-selection of failing drive(s)
- Field-tested **100,000 hours robotics MTBF** with no preventive maintenance..
- 100% up time! If the robotics fail, the Galaxy switches to Manual Duplication mode (Riho II).
- **Rail mounted burners** allow a very fast installation or removal without taking the system apart.

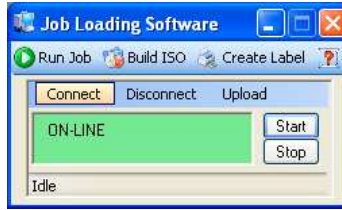
Alea Systems, Inc.

ALEA SYSTEMS

"DUETTO" Software



Job loading from PC



Standalone Operation



"DUETTO" ECP Client



Duplicate all Media



"DUETTO" Client/Server program (option):

- Control up to 32 Galaxy Pro units (256 Writers, 32 Printers)
- Burn CD/DVD directly from master image files created by its "Make ISO" tool or by your application software.
- Queue an unlimited number of jobs.
- Up load image and print files with the unlimited license "Duetto ECP Client" software.
- Duplicate .BIN, .CUE and .ISO files.
- User friendly API (Applications Program Interface) allows a seamless integration of the "Duetto" into your application software.
- **Job Loading Software** to create images, create&edit discs label to uplaode to the DVD Galaxy.
- **Job Sorter**: Process up to 5 jobs during the same duplication batch. Each job goes into its dedicated hopper

DVD Galaxy 8 throughput:

Copying only: 150 CD, 60 DVD or 20 BD disc per Hour

Printing only: 70 disc per hour (100% coverage digital color quality)

Copying and Printing: 20 BD, 60 DVD or 70 CD disc per hour.



Ink Jet CD Printer with Ink Fountain

- **Standard HP ink cartridges** (type 56 & 57).
- Copy and Print at the **same time**.
- lowest print cost in the industry (<3cent).

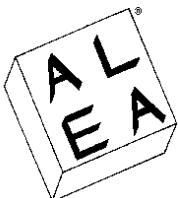
Specifications:

KEYPAD: Membrane with tactile feedback keys.
 Temperature: 5 to 30 Degrees Centigrade Relative
 Altitude : 0 to 10,000 ft operating
 Size (W/H/D): 110/50/35 cm. (table edge installed)
 Weight: 19 Kg Agencies:

POWER SUPPLY: AC 110 or 220 switch, 50/60 Hz
 Humidity: 10% to 80% no condensing
 0 to 15,000 ft no operating

FCC class A, CE

All trademarks are property of their respective holders. Specifications are subject to change without notice. 03/09



ALEA SYSTEMS Inc.

10900 Pump House Road, Suite B
 Annapolis Junction, MD 20701, USA
 Phone: (301) 776-3754
 Fax: (301) 776-7561
 Web Site: www.alea.com

In Europe: **ALEA EUROPE** a division of **DUPLICOSrl**

Via degli Olmetti, 39F
 00060 Formello (RM)
 Phone: (+39-06) 9075169
 Fax: (+39-06) 9075733
 E-Mail: sales@alea.com